

**MedPharmRes (MPR) TITLE PAGE**  
**Upload this completed form to website with submission**

ARTICLE INFORMATION	Fill in information in each box below
<b>Article Type</b>	Research article
<b>Article Title (within 20 words without abbreviations)</b>	<b>Source-Specific PM2.5 Pollution and Respiratory Health Impacts in an Urban Asian District: A Real-Time Monitoring Study in Ho Chi Minh City, Vietnam</b>
<b>Running Title (within 10 words)</b>	Source-Specific PM2.5 and Health in Ho Chi Minh City
<b>Author</b>	Thuy Thi Truc Phan <sup>1</sup> , Thu Thi Anh Tran <sup>1</sup> , Quang Minh Lam <sup>1</sup> , Tram Thi Hong Huynh <sup>1</sup> , Loan Thi Hong Bui <sup>2</sup> , Dang Ngoc Tran <sup>1*</sup>
<b>Affiliation</b>	1Faculty of Public Health, University of Medicine and Pharmacy at Ho Chi Minh City, Vietnam 2General Planning Department, University Medical Center Ho Chi Minh City, Vietnam
<b>ORCID (for more information, please visit <a href="https://orcid.org">https://orcid.org</a>)</b>	Tran Ngoc Dang ( <a href="https://orcid.org/0000-0002-5287-0265">https://orcid.org/0000-0002-5287-0265</a> ) Lam Minh Quang ( <a href="https://orcid.org/0000-0003-1718-6799">https://orcid.org/0000-0003-1718-6799</a> ) Huynh Thi Hong Tram ( <a href="https://orcid.org/0000-0003-3289-9965">https://orcid.org/0000-0003-3289-9965</a> ) Phan Thi Truc Thuy ( <a href="https://orcid.org/0009-0004-2912-9075">https://orcid.org/0009-0004-2912-9075</a> ) Tran Thi Anh Thu ( <a href="https://orcid.org/0009-0008-2414-0696">https://orcid.org/0009-0008-2414-0696</a> ) Loan Thi Hong Bui (n/a)
<b>Competing interests</b>	No potential conflict of interest relevant to this article was reported.
<b>Funding sources</b> State funding sources (grants, funding sources, equipment, and supplies). Include name and number of grant if available.	This research was funded by the University of Medicine and Pharmacy at Ho Chi Minh City under grant number 01/2023/HĐ-ĐHYD
<b>Acknowledgements</b>	We thank Dr. Dang Anh Tuan for his assistance in editing the English language of the manuscript. We are also grateful to the People's Committee of District 5 for their support in facilitating data collection for this study
<b>Availability of data and material</b>	Upon reasonable request, the datasets of this study can be available from the corresponding author.
<b>Authors' contributions</b> Please specify the authors' role using this form. Authors can't change and add items, but you can delete items that are not applicable.	Conceptualization: Dang Ngoc Tran Data curation: Thuy Thi Truc Phan, Thu Thi Anh Tran, Quang Minh Lam, Tram Thi Hong Huynh, Loan Thi Hong Bui Formal analysis: Dang Ngoc Tran, Thuy Thi Truc Phan Methodology: Dang Ngoc Tran, Thu Thi Anh Tran, Loan Thi Hong Bui Writing - original draft: Thuy Thi Truc Phan, Quang Minh Lam, Tram Thi Hong Huynh Writing - review & editing: Dang Ngoc Tran, Thuy Thi Truc Phan, Thu Thi Anh Tran, Quang Minh Lam, Tram Thi Hong Huynh, Loan Thi Hong Bui
<b>Ethics approval and consent to participate</b>	This study's ethics was approved by the Biomedical Research Ethics Committee of The university of Medicine and Pharmacy at Ho Chi Minh City, No.253/HĐĐĐ-ĐHYD.

**CORRESPONDING AUTHOR CONTACT INFORMATION**

<b>For the corresponding author (responsible for correspondence, proofreading, and reprints)</b>	<b>Fill in information in each box below</b>
First name, middle initial, last name	Dang, Ngoc, Tran
Email address – this is where your proofs will be sent	tranngocdang@ump.edu.vn
Secondary Email address	ngocdangytcc@gmail.com
Address	217 Hong Bang street, District 5, Ho Chi Minh City, Vietnam
Cell phone number	+84-985137435
Office phone number	(+84-28) 3855 8411
Fax number	(+84-28) 3855 2304

**Abstract:**

**Introduction:** Fine particulate matter (PM<sub>2.5</sub>) is a pressing public health challenge in rapidly urbanizing Asian cities. In District 5 of Ho Chi Minh City, Vietnam, localized PM<sub>2.5</sub> pollution arises from diverse sources such as stationary street food vendors, religious temples, traffic congestion, and fuel stations. Understanding the relative contribution of these sources is critical for designing effective interventions. This study aims to identify and quantify the contributions of specific local PM<sub>2.5</sub> sources to respiratory health outcomes among residents in District 5, Ho Chi Minh City. **Methods:** We conducted a source-specific assessment of PM<sub>2.5</sub> exposure and its association with respiratory health outcomes using a real-time sensor network (Airbeam3) deployed at seven sites representative of key emission sources. A total of 184 participants were recruited for the study, including residents living near various PM<sub>2.5</sub> sources. Respiratory symptoms were evaluated through a locally adapted American Thoracic Society questionnaire (ATS-DLD-78). Multivariable regression models were used to quantify the impact of specific sources on reported symptoms. **Results:** Stationary street-food vendors and traffic congestion were identified as dominant contributors to PM<sub>2.5</sub> pollution. Residents living near continuous traffic and stationary street vendor areas experienced significantly higher rates of sputum production. Stationary street-food vendors exhibited the strongest association with adverse outcomes ( $\beta = 0.47$ ,  $p < 0.001$ ). **Conclusion:** Our findings highlighted the urgent need for targeted air pollution control strategies in complex urban environments. Interventions such as cleaner cooking technologies and improved traffic management may significantly reduce PM<sub>2.5</sub> exposure and its health burden. This study demonstrates the utility of low-cost, real-time monitoring for guiding public health policies in rapidly developing megacities.

**Keywords:** PM<sub>2.5</sub> pollution, respiratory health, source-specific analysis, stationary street food vendors, traffic congestion, air quality monitoring, low-cost sensors, Ho Chi Minh City, urban air pollution, public health policy.

## 1. Introduction

Air pollution, particularly by fine particulate matter (PM<sub>2.5</sub>), has become a pressing global health challenge, contributing significantly to the rising burden of respiratory and cardiovascular diseases. PM<sub>2.5</sub> particles, due to their microscopic size, can penetrate deep into the respiratory tract, causing severe health effects and elevating mortality rates (1). In rapidly urbanizing cities like Ho Chi Minh City (HCMC), Vietnam, the combination of rapid economic growth, increasing population density and unregulated urban activities has exacerbated air pollution, posing critical health risks to the population.

District 5 in HCMC exemplifies this urban complexity, characterized by heavy traffic congestion, dense street food vending, numerous religious temples, and fuel stations, all of which contribute significantly to localized PM<sub>2.5</sub> emissions. Despite growing concerns, there is a critical research gap in understanding how these diverse sources specifically impact air quality and public health. Previous studies in global megacities have emphasized the dominant role of traffic emissions, but the distinct urban fabric of HCMC, with its dense network of informal street economies and cultural practices, demands a more localized, source-specific analysis. (2-6)

Traditional air quality monitoring systems, while accurate, are often costly and lack the spatial resolution to capture localized pollution variations. The advent of low-cost sensor technologies, such as the Airbeam3, offers a promising solution for continuous, real-time, and high-resolution air quality monitoring. This technological advancement enables researchers to precisely identify and quantify emissions from specific sources and assess their direct health impacts on nearby populations (7-11).

This study aimed to bridge the knowledge gap by conducting a source-specific analysis of PM<sub>2.5</sub> emissions in District 5 and evaluating their association with respiratory health outcomes. By deploying Airbeam3 sensors across multiple strategic locations and integrating health survey data, this research provided critical insights into the localized dynamics of air pollution. The findings formed a basis to inform targeted, evidence-based policies to mitigate PM<sub>2.5</sub> emissions and safeguard public health in Ho Chi Minh City and similar urban environments globally.

## 2. Methods

## 2.1. Study area

This study was conducted in District 5, Ho Chi Minh City (geographic coordinates: 10.762622, 106.660172), an area known for its dense population and diverse sources of air pollution. District 5 was specifically chosen due to its complex urban structure, characterized by heavy traffic congestion, a high concentration of stationary street food vendors, numerous religious temples, and fuel stations. Prior studies have identified this district as a significant air pollution hotspot, making it an ideal location to study localized PM<sub>2.5</sub> exposure and its impact on respiratory health. The district's socio-economic diversity and proximity between residential areas and pollution sources further underscored its suitability for this investigation.

## 2.2. Air quality monitoring

PM<sub>2.5</sub> concentrations were continuously monitored using the Airbeam3 air quality sensor. AirBeam® is a low-cost, palm-sized air quality monitoring device (weighing 6 ounces) designed to measure fine particulate matter concentrations, including PM<sub>1</sub>, PM<sub>2.5</sub>, and PM<sub>10</sub>, as well as temperature and relative humidity (**Figure 1**). Its robust and weather-resistant casing makes it suitable for both indoor and outdoor use, in either fixed or mobile applications. The device is equipped with GPS, a real-time clock, an SD card, and a rechargeable lithium battery (3.7V, 3350 mAh), allowing it to operate independently from Android or iOS devices once disconnected. According to the manufacturer, a fully charged battery can power the device for approximately 17 hours. Measured data are designed to store and transmit via Bluetooth, Wi-Fi, or 4G mobile networks. Users can access AirBeam3 measurement results through the AirCasting website or Android and iOS applications (12). The performance of AirBeam has been evaluated by the South Coast Air Quality Management District's AQ-SPEC program in the United States. Comparing AirBeam3 data with the Federal Equivalent Method (FEM), the results demonstrated a strong correlation for PM<sub>1</sub> and PM<sub>2.5</sub>, with R<sup>2</sup> values ranging from 0.81 to 0.99 (13).

This device was selected for its high accuracy, affordability, and real-time data recording capability, making it suitable for dense urban environments. Seven Airbeam3 devices were strategically installed at key locations representing various pollution sources: continuous traffic, stop-and-go traffic, stationary street food vendors, temples, fuel stations, schools, and a background control site elevated 10 meters above ground (**Figure 2**). PM<sub>2.5</sub> monitoring was conducted during the rainy season in Ho Chi Minh City. Throughout the data collection period, no extreme weather events such as typhoons, severe flooding, or prolonged heavy

rainfall were recorded. Moderate rainfall was typical during the season when the research took place. To ensure reliable measurements and minimize direct weather impacts, Airbeam3 devices were installed approximately 5 meters away from the road surface and elevated 2 meters above ground level. Each sensor was protected by a fixed cover to shield against rain and environmental disturbances, thereby maintaining measurement consistency. Each sensor was calibrated and tested before deployment to ensure data reliability. Data collection spanned seven consecutive days, with measurements recorded every minute. Regular maintenance and data validation checks were conducted twice daily to ensure the consistency and integrity of the data.

The monitoring period was carefully chosen to capture typical daily activities and pollution patterns, accounting for both weekdays and weekends.

### **2.3. Respiratory health assessment**

Respiratory health outcomes were assessed using a modified version of the American Thoracic Society Division of Lung Disease (ATS-DLD-78) questionnaire, adapted to the local context. The questionnaire covered chronic respiratory symptoms such as cough, sputum production, wheezing, and shortness of breath (14). Additional questions were added to capture participant's exposure to specific PM<sub>2.5</sub> emission sources relevant to the study context (e.g., proximity to street food vendors, traffic congestion areas, gas stations). We also conducted a pilot study on 40 participants who met the inclusion criteria. Face-to-face interviews were conducted using the draft questionnaire to test clarity, relevance, and comprehensibility. Based on participant feedback, minor wording adjustments were made to finalize the questionnaire before it was used in the primary study. The final version of questionnaire can be found at the [Supplementary Table S1-file](#). Data collected during the pilot phase were not included in the final analysis. The sample size was calculated based on the formula for estimating a proportion. Using an expected proportion of 37.5% ( $p = 0.375$ ), derived from a study on respiratory symptoms in urban Pakistani populations, we set a margin of error ( $d$ ) at 0.07 (15). Participants were required to be at least 18 years old, to reside within a 10-meter radius of identified PM<sub>2.5</sub> emission sources. Residents who had lived and worked continuously in the study area for less than three years were excluded. A stratified random sampling method was employed to ensure diverse representation across all pollution sources. Ethical approval was obtained, and written informed consent was collected from all

participants. This study's ethics was approved by the Biomedical Research Ethics Committee of the University of Medicine and Pharmacy at Ho Chi Minh City, No.253/HĐĐĐ-ĐHYD.

#### 2.4. Statistical analysis:

Continuous variables were presented as means and standard deviations (SD). Categorical variables were reported as frequency and percentage.

PM2.5 emission sources on ambient PM2.5 concentrations in the community was assessed following a modelling approach similar to previous studies (16, 17). The model was defined as follows:

$$P_{local} = \beta_0 + \gamma_1(P_{background}) + \gamma_2(temperature) + \gamma_3(humidity) + \sum \beta_i X_i + \varepsilon$$

where:

- $P_{local}$  ( $\mu\text{g}/\text{m}^3$ ) represented the local mean PM2.5 concentration, measured at a 5-minute resolution within a 5-meter radius from potential emission sources.
- $P_{background}$  ( $\mu\text{g}/\text{m}^3$ ) denoted the background PM2.5 concentration, measured at a 5-minute resolution at a height of 10 meters above the ground, serving as the reference concentration.
- *Temperature* ( $^{\circ}\text{C}$ ) and *humidity* (%) were recorded at the same 5-minute resolution.
- $\beta_0$  was the intercept, and  $\gamma_1, \gamma_2, \gamma_3, \beta_i$  were the regression coefficients.
- $\varepsilon$  represented the error term.
- $X_i$  was a binary variable indicating the presence of a specific PM2.5 emission source within the 5-meter radius of the measurement site.

The variable  $X_i$  was assigned a value of **1** if an emission source is present within the 5-meter radius; otherwise, it was set to **0**. For example, if a traffic signal is located within this radius,  $X_i=1$ ; otherwise,  $X_i=0$ . If a stationary street food vendor is present, but only operates within a specific time window (e.g., from 1:00 PM to 6:00 PM), then  $X_i = 1$  during these hours and  $X_i=0$  otherwise. The regression model included only emission sources with active operations during the measurement period.

The normality of residuals of the data was assessed through visual inspection of Q-Q plots and/or by using the Shapiro-Wilk test. In addition, the regression model was built using hypothesis driven approach rather than determine the best fit model using statistical indices,

such as AIC, BIC. The Variance Inflation Factor (VIF) of the final model was conducted to examine the multicollinearity. Statistical analyses were conducted using R software (version 4.4.2), and the analytical process aimed to provide robust and replicable results. Regression coefficients ( $\beta$ ) and their confidence intervals (CI) were calculated to quantify the strength of associations, for which the statistical significance was set at 95%. A logistic regression analysis was conducted to examine the association between area-level PM2.5 concentration and respiratory symptoms, including odds ratios and 95% confidence intervals.

### 3. Results

#### 3.1. PM2.5 concentration levels:

The PM2.5 monitoring data collected over seven consecutive days revealed significant variations across different emission sources. The highest 24-hour average PM2.5 concentration was recorded near stationary street food vendor areas, with a mean of 41.7  $\mu\text{g}/\text{m}^3$ , and the peak level reached 598.0  $\mu\text{g}/\text{m}^3$  (**Figure 3**). This was followed by stop-and-go traffic zones (16.4  $\mu\text{g}/\text{m}^3$ ) and continuous traffic areas (14.8  $\mu\text{g}/\text{m}^3$ ). In contrast, the background control site elevated 10 meters above ground level reported the lowest concentration at 14.0  $\mu\text{g}/\text{m}^3$ . Notably, PM2.5 levels spiked at temple sites on the Buddhist Vesak holiday, reflecting ritual incense burning activities (19.1  $\mu\text{g}/\text{m}^3$ ) (**Figure 3**).

Daily average PM2.5 concentrations generally met the QCVN 05:2023 standards (50  $\mu\text{g}/\text{m}^3$ ), except for the location near continuous traffic and stationary street food vendors (P8.1), which exceeded the limit on May 30th (52  $\mu\text{g}/\text{m}^3$ ). However, when compared to WHO's 2021 standard for 24-hour PM2.5 levels (15  $\mu\text{g}/\text{m}^3$ ), nearly 50% of the daily measurements did not meet the guideline (**Figure 4**).

The multivariable regression model examining factors associated with community PM2.5 concentrations included continuous traffic, stop-and-go traffic, religious temples, stationary street food vendors, fuel stations, traffic near schools, background levels, temperature, and humidity. This model explained 34% of the variance in the 5-minute average PM2.5 concentration in the community. **Table 1** presents the emission sources in descending order of their partial  $R^2$  values.

In the multivariable regression model, among various PM2.5 emission sources, areas with stationary street food vendors exhibited a 53.22  $\mu\text{g}/\text{m}^3$  higher 5-minute average PM2.5



concentration compared to areas without stationary street food vendors, with statistical significance ( $p < 0.001$ ). This emission source contributed the most to the variation in PM<sub>2.5</sub> concentrations within the study area, with a partial  $R^2$  of 21.15%.

### 3.2. Respiratory health outcomes:

A total of 220 individuals were approached, with 36 excluded due to incomplete responses or ineligibility, resulting in a final sample of 184 and a response rate of 83.6%. **Table 2** shows the characteristics of participants in the study. Among the 184 study participants, the largest age group was over 37 years old, accounting for 63.6%. The gender distribution was relatively balanced between males and females. The most common occupation was business/trade (37.5%), while homemakers had the lowest proportion (16.9%). The majority of participants had lived and worked in the study area for 3 to 10 years (44.6%). The prevalence of participants with a history of respiratory-related diseases (including asthma, tuberculosis, etc.) was 13.0%. Most participants were non-smokers (78.8%) and did not live with a smoker (72.3%). Incense use was reported by 73.4% of participants. Among environmental exposures, the highest proportion of participants lived near continuous traffic (35.3%), while the lowest proportion lived near fuel stations (7.6%).

**Table 3** shows the association between living near PM<sub>2.5</sub> sources and respiratory symptoms measured by ATS-DLD-78. There was a statistically significant association between sputum production and living near continuous traffic. Participants with sputum production had 5.54 times higher odds of living near continuous traffic areas compared to those without sputum production (OR = 5.54, 95% CI: 1.95–18.4). Similarly, participants with sputum production had 3.45 times higher odds of living near stationary street food vendor areas compared to those without this symptom (OR = 3.45, 95% CI: 1.08–10.1). However, the study did not find a statistically significant association between living near PM<sub>2.5</sub> emission sources and other respiratory symptoms, including cough, wheezing, and shortness of breath among the study participants.

Multicollinearity diagnostics indicated high VIF values for temperature and relative humidity, suggesting a strong correlation between these two meteorological variables. To assess their individual contributions and potential collinearity effects, we compared the full model (including both variables) with two reduced models: one excluding temperature and one excluding relative humidity. The regression coefficients remained stable across models, indicating that multicollinearity did not substantially bias the estimates (Supplementary [Table](#)

[S2-file](#)). Nonetheless, this limitation should be considered when interpreting the influence of environmental variables on PM<sub>2.5</sub> concentrations.

## 4. Discussion

### 4.1. Air quality standards and PM<sub>2.5</sub> concentrations

The daily average PM<sub>2.5</sub> concentrations on most study days met the Vietnamese National Technical Regulation on Ambient Air Quality (QCVN 05:2023). However, when compared to the 2021 WHO Air Quality Guidelines, which set a 24-hour PM<sub>2.5</sub> standard of 15 µg/m<sup>3</sup>, the proportion of days exceeding this threshold was relatively high (57.1%).

### 4.2. Impact of street food cooking on PM<sub>2.5</sub> levels

In our study, the nearest stationary street food vendor to the PM<sub>2.5</sub> monitoring device operated only between 6:00 AM and 1:00 PM daily. During these hours, PM<sub>2.5</sub> concentrations spiked significantly, exceeding the Vietnamese standard multiple times and at certain moments, reaching levels ten times higher than the allowable limit. This suggested that cooking activities at street food stalls directly influence the 24-hour average PM<sub>2.5</sub> concentration, resulting in substantial variations across monitoring locations.

Previous studies worldwide have also identified cooking activities as a major contributor to urban PM pollution. In Taiwan, 24% of study participants lived within 15 meters of smoke-emitting restaurants (18). Additionally, studies have shown that cooking with charcoal produced the highest PM<sub>2.5</sub> emissions compared to other fuel types (19). The level of PM<sub>2.5</sub> emissions is also influenced by the type of cooking oil used and the cooking method applied (20, 21). In our study area, stationary street food vendors primarily used gas stoves for frying and stir-frying, with an average PM<sub>2.5</sub> concentration of 41.7 µg/m<sup>3</sup> during the monitoring period, peaking at 598.0 µg/m<sup>3</sup>, with the lowest recorded concentration at 3.8 µg/m<sup>3</sup>.

### 4.3. Influence of incense burning in temples on PM<sub>2.5</sub> concentrations

One notable observation was on June 2nd, corresponding to the full moon of the fourth lunar month, a significant religious day. On this date, the 24-hour average PM<sub>2.5</sub> concentration at site P11.3 increased to 19.1 µg/m<sup>3</sup>, the highest level recorded at this location during the study period. A similar study conducted at temples in Vietnam and Taiwan reported comparable findings, where PM<sub>1</sub> and PM<sub>2.5</sub> levels on religious event days (1st and 15<sup>th</sup> in the lunar calendar) were approximately twice as high as on non-event days, highlighting the impact of incense burning on PM levels (22).

#### 4.4. Contribution of traffic-related PM<sub>2.5</sub> emissions

Traffic-related PM<sub>2.5</sub> sources in our study included continuous traffic (P11.4), stop-and-go traffic (P11.1), and school traffic (P12.2). These locations were selected as they had only one primary traffic-related emission source within a 5-meter radius. Other locations, such as P8.1, P11.3, and P12.1, had additional emission sources (e.g., temples, fuel stations, or stationary street food vendors) within the 5-meter range. Although the association between living near continuous traffic and sputum production was statistically significant, the 95% confidence interval was relatively wide (OR = 5.54, 95% CI: 1.95–18.4), indicating a high degree of uncertainty around the point estimate. This may be attributed to the limited sample size in certain exposure groups, which reduced the precision of the estimated odds ratios. Therefore, this result should be interpreted with caution. Future studies with larger sample sizes are needed to confirm this association and provide more stable estimates.

In Vietnam, traffic emissions are a dominant source of air pollution. According to 2018 statistics, Ho Chi Minh City had a total population of 8.8 million, while the number of registered vehicles was 8,658,087 - including 762,581 cars and 7,895,506 motorcycles - not accounting for vehicles entering the city from neighbouring provinces (23). With most vehicles relying on gasoline and diesel fuels, combustion emissions are the primary source of air pollutants. At intersections and road junctions, air pollution levels tend to be higher due to vehicles accelerating and restarting. Similarly, fuel stations and school traffic zones experience increased pollution levels due to vehicle idling and stopping. Additionally, narrow roads, aging infrastructure, and frequent traffic congestion further exacerbate urban air pollution, particularly in high-density cities like Ho Chi Minh City.

#### 4.5. Multivariate regression model for PM<sub>2.5</sub> sources

The multivariate regression model assessing community PM<sub>2.5</sub> sources in our study included continuous traffic, stop-and-go traffic, temples, stationary street food vendors, fuel stations, school traffic, temperature, and humidity, explaining 34% of the variance in the 5-minute average PM<sub>2.5</sub> concentration. Among these sources, stationary street food vendors contributed the most, with a partial R<sup>2</sup> of 21.1%.

A similar study by S.C.C. Lung et al. (2020) assessed community-level PM<sub>2.5</sub> sources, incorporating multiple emission sources. Their model explained 57% of PM<sub>2.5</sub> variance, with background PM<sub>2.5</sub> levels contributing the most (partial R<sup>2</sup> = 54.3%), followed by seasonal effects (0.16%) (17). In contrast, in our study area, stationary street food vendors were the

dominant contributor, with higher PM<sub>2.5</sub> concentrations (53.22  $\mu\text{g}/\text{m}^3$ ) than areas without food stalls. Moreover, continuous traffic contributed more to PM<sub>2.5</sub> levels than stop-and-go traffic, likely due to differences in fuel types, cooking materials, and the characteristics of the residential area. The negative regression coefficient associated with the gas station variable may be attributed to several factors. Many gas stations are located on open lots set with lower traffic density and better natural ventilation, which may reduce PM<sub>2.5</sub> accumulation. Alternatively, this result may reflect confounding factors or sample limitations and should be interpreted with caution.

#### **4.6. Limited research on PM<sub>2.5</sub> source contributions in Vietnam**

In Vietnam, there is limited research on PM<sub>2.5</sub> source contributions using low-cost sensors, while emission inventories are more commonly used. A PM<sub>2.5</sub> emission inventory study in Ho Chi Minh City by Ho Quoc Bang et al. (2017) reported that restaurants and food stalls accounted for 29.56% of total PM<sub>2.5</sub> emissions from area sources (24), highlighting their significant contribution to urban air pollution.

#### **4.7. Comparison with other Asian urban environments**

Living near traffic and other PM<sub>2.5</sub> sources has been extensively studied in Asian cities. In Taiwan, 30% of residents lived within 15 meters of major roads, and 24% lived near smoke-emitting restaurants. Additionally, 13% lived near night markets, and 40% resided within 50 meters of temples where incense burning occurred (18). A separate survey found that 54.3% of Taipei's urban population lived within 10 meters of a major road (16).

Urban residential areas in Asia differ significantly from Western cities, partly due to historical development patterns, high population density, and a lack of strict urban planning. Over time, food stalls, traffic, temples, and schools have become interwoven into residential areas, exposing communities to multi-source air pollution. Importantly, this localized pollution is not always reflected in data from fixed air quality monitoring stations.

#### **4.8. Health impacts of living near PM<sub>2.5</sub> emission sources**

The association between residential proximity to traffic and respiratory health has been extensively studied. One study found that individuals living within 100 meters of a major road had a 2.54-fold higher odds of chronic cough than those living beyond 200 meters (25). Another study found that individuals living within 20 meters of major roads had a 15% higher risk of frequent sputum production, a 34% higher risk of wheezing and other respiratory issues, even among non-smokers (26).

Street food is a distinctive feature of Asian cities, with vendors typically located near traffic-heavy areas for convenience and accessibility. However, stationary street food vendors are among the most affected by air pollution, with 86.2% reporting respiratory symptoms in the past 12 months. Their FEV1 (forced expiratory volume in 1 second) and FVC (forced vital capacity) values were significantly lower than predicted values, indicating adverse respiratory effects (27).

In our study, we identified a statistically significant association between living near stationary street food vendors and sputum production (OR = 3.45,  $p = 0.03$ ). This may be due to the fact that sputum production is a more immediate and sensitive response to airway irritation caused by particulate matter, particularly in environments with prolonged or repeated exposure.

#### **4.9. Study limitations and future research directions**

Our study successfully utilized low-cost sensors for community-level PM<sub>2.5</sub> monitoring, offering high-resolution (1-minute) continuous measurements. However, data collection was conducted only during the rainy season, limiting our ability to account for seasonal variations. In Ho Chi Minh City, PM<sub>2.5</sub> level peaks in the dry season (February) and declines during the rainy season (August) (24). Future studies should incorporate seasonal and precipitation effects into regression models.

Additionally, outdoor sensor placement and power supply constraints during the rainy season resulted in fewer valid monitoring days than anticipated. Although limited to seven days, the monitoring period included a significant local event—the Buddhist Vesak holiday—allowing the study to assess the impact of religious activities on PM<sub>2.5</sub> levels. Future studies should consider longer monitoring periods to capture seasonal variations in air pollution. Moreover, respiratory symptoms were self-reported, potentially introducing recall bias.

This study employed a hypothesis-driven regression approach and did not use model selection criteria such as AIC or BIC. Multicollinearity was assessed using VIF, which revealed high values for temperature and relative humidity. We addressed this by comparing models with and without these variables and found consistent estimates. However, other aspects of model fit were not fully evaluated. In addition, repeated measurements may have introduced temporal autocorrelation, which was reduced through daily averaging but not completely eliminated. Future studies should consider larger datasets and more advanced modelling strategies.

## 5. Conclusion

This study successfully achieved its objectives of identifying and quantifying the contributions of various localized PM<sub>2.5</sub> pollution sources and their direct impact on respiratory health in densely populated areas of Ho Chi Minh City. Notably, emissions from stationary street food vendors and traffic congestion were identified as the most significant contributors to elevated PM<sub>2.5</sub> concentrations, with a strong correlation to the symptom of sputum production. This finding fills a critical research gap in Vietnam, highlighting the urgent need for source-specific mitigation strategies to protect public health.

### Acknowledgements

We sincerely thank the People's Committee of District 5 for facilitating our data collection for this research. We also extend our gratitude to Mr. Dang Anh Tuan, M.A., for his English editing of the manuscript. Our sincere thanks go to the participants who took part in the survey.

This article includes references to proprietary products from AirBeam®, which may be protected under applicable copyright and intellectual property laws. The inclusion, reproduction, citation, or analytical use of these materials has been carried out strictly for non-commercial, academic research purposes. This usage aligns with the principle of fair use as defined in Clause 4, Article 3 of the Law on Science and Technology (No. 29/2013/QH13) and Point a, Clause 1, Article 25 of the Law on Intellectual Property (No. 50/2005/QH11) in Vietnam. The authors affirm that this use was undertaken in good faith and in accordance with academic integrity and ethical research practices. The inclusion of copyrighted material does not imply endorsement, authorization, or sponsorship by the rights holders, nor is it intended to infringe upon any intellectual property rights. Any individual or organization who believes their legal rights have been affected is encouraged to contact the corresponding author(s) or MedPharmRes for clarification and resolution, in line with applicable fair use standards.

### Funding sources

This research was funded by the University of Medicine and Pharmacy at Ho Chi Minh City under contract number 01/2023/HD-DHYD, with Assoc. Prof. Dr. Tran Ngoc Dang as the principal investigator.

### Conflict of interest

No potential conflict of interest relevant to this article was reported.

### **Authors' contributions**

Conceptualization: Tran Ngoc Dang, Phan Thi Truc Thuy.

Methodology: Phan Thi Truc Thuy, Tran Thi Anh Thu, Lam Minh Quang, Huynh Thi Hong Tram, Bui Thi Hong Loan.

Validation: Lam Minh Quang, Huynh Thi Hong Tram, Bui Thi Hong Loan.

Investigation: Phan Thi Truc Thuy, Tran Thi Anh Thu.

Writing - original draft: Phan Thi Truc Thuy, Tran Thi Anh Thu, Tran Ngoc Dang.

Writing - review & editing: Phan Thi Truc Thuy, Tran Thi Anh Thu, Lam Minh Quang, Huynh Thi Hong Tram, Bui Thi Hong Loan.

### **Availability of data and material**

Upon reasonable request, the datasets of this study can be available from the corresponding author.

### **Ethics approval**

This study's ethics was approved by the Biomedical Research Ethics Committee of the University of Medicine and Pharmacy at Ho Chi Minh City, No.253/HĐĐĐ-ĐHYD.

### **Supplementary Materials**

Supplementary materials are only available online from:

<https://doi.org/10.32895/UMP.MPR.9.3.x>

## **References**

1. Li T, Hu R, Chen Z, Li Q, Huang S, Zhu Z, et al. Fine particulate matter (PM<sub>2.5</sub>): The culprit for chronic lung diseases in China. *Chronic diseases and translational medicine*. 2018;4(3):176-86. Epub 2018/10/03. doi: 10.1016/j.cdtm.2018.07.002. PubMed PMID: 30276364; PubMed Central PMCID: PMC6160608.
2. Ho BQ, Vu HNK, Nguyen TTT, Nguyen TT, Nguyen TTH, Khoa NTD, et al. Photochemical modeling of PM<sub>2.5</sub> and design measures for PM<sub>2.5</sub> reduction: A case of Ho Chi Minh City, Vietnam. *IOP Conference Series: Earth and Environmental Science*. 2021;652(1):012025. doi: <https://doi.org/10.1088/1755-1315/652/1/012025>.
3. Tran TV, Ha DXB, Vo QB, Dinh TKP, Nguyen TDH. High-Resolution Spatial Solution for Air Quality Assessment in the Tropical city of Ho Chi Minh City, Vietnam. *Carpathian Journal of Earth and Environmental Sciences*. 2022;17(2):275-86.

4. Bui LT, Nguyen PH, Nguyen DCM. Spatio-temporal modelling and related factors analysis of PM<sub>2.5</sub> pollution: A case study of Ho Chi Minh city, Vietnam. *Physics and Chemistry of the Earth, Parts A/B/C*. 2023;131:103417. doi: <https://doi.org/10.1016/j.pce.2023.103417>.
5. Shan M, Wang Y, Lu Y, Liang C, Wang T, Li L, et al. Uncovering PM<sub>2.5</sub> transport trajectories and sources at district within city scale. *Journal of Cleaner Production*. 2023;423:138608. doi: <https://doi.org/10.1016/j.jclepro.2023.138608>.
6. Tran N, Fujii Y, Khan MF, Hien TT, Minh TH, Okochi H, et al. Source apportionment of ambient PM<sub>2.5</sub> in Ho Chi Minh City, Vietnam. *Asian Journal of Atmospheric Environment*. 2024;18(1):1. doi: <https://doi.org/10.1007/s44273-023-00024-7>.
7. Correia C, Santana P, Martins V, Mariano P, Almeida A, Almeida SM. Advancing air quality monitoring: A low-cost sensor network in motion – Part I. *Journal of Environmental Management*. 2024;360:121179. doi: <https://doi.org/10.1016/j.jenvman.2024.121179>.
8. Guerrón RA, Carnì DL, Lanuzza M, Amore FD, Bencardino M, Lamonaca F, et al., editors. Design of an Air Pollution Monitoring System Based on a Low-Cost Sensor Node. 2024 IEEE International Workshop on Metrology for Living Environment (MetroLivEnv); 2024 12-14 June 2024.
9. Masic A. City-Scale Air Quality Network of Low-Cost Sensors. *Atmosphere*. 2024;15(7):798. PubMed PMID: doi:10.3390/atmos15070798.
10. Petrică SM, Făgărășan I, Stamatescu I, Arghira N, Pietraru RN, editors. Low-cost air pollution monitoring systems. 2024 28th International Conference on System Theory, Control and Computing (ICSTCC); 2024 10-12 Oct. 2024.
11. Seesaard T, Kamjornkittikoon K, Wongchoosuk C. A comprehensive review on advancements in sensors for air pollution applications. *Science of The Total Environment*. 2024;951:175696. doi: <https://doi.org/10.1016/j.scitotenv.2024.175696>.
12. HabitatMap. AirBeam3 Technical Specifications, Operation & Performance 2021 [cited 2022 June 27]. Available from: <https://www.habitatmap.org/airbeam/users-guide#:~:text=AirBeam3%20is%20a%20palm%20sized,a%20stationary%20or%20mobile%20monitor.>
13. Michael H. Evaluation Proves AirBeam3 Most Accurate AirBeam Ever 2022 [cited 2022 August 27]. Available from: <https://www.habitatmap.org/blog/evaluation-proves-airbeam3-most-accurate-airbeam-ever#:~:text=The%20results%20showed%20strong%20to,ranging%20from%200.19%20to%200.37.>



14. Nkosi V, Voyi K. Reliability of an adult respiratory symptom questionnaire in a community located near a mine dump in South Africa: pilot study. *Southern African Journal of Infectious Diseases*. 2016;31(3):103-5.
15. Akhter Z, Razzaq S, Rabbani U, Irfan M, Burney P, Nafees AA. Prevalence of and risk factors for respiratory symptoms in an adult urban population. *The international journal of tuberculosis and lung disease : the official journal of the International Union against Tuberculosis and Lung Disease*. 2021;25(1):16-22. Epub 2021/01/02. doi: 10.5588/ijtld.20.0057. PubMed PMID: 33384040.
16. Lung SCC, Hsiao PK, Wen TY, Liu CH, Fu CB, Cheng YT. Variability of intra-urban exposure to particulate matter and CO from Asian-type community pollution sources. *Atmospheric Environment*. 2014;83:6-13. doi: <https://doi.org/10.1016/j.atmosenv.2013.10.046>.
17. Lung SCC, Wang WCV, Wen TYJ, Liu CH, Hu SC. A versatile low-cost sensing device for assessing PM2.5 spatiotemporal variation and quantifying source contribution. *Science of The Total Environment*. 2020;716:137145. doi: <https://doi.org/10.1016/j.scitotenv.2020.137145>.
18. Lung SCC, Lee CR, Hu SC. Inequality of Asian-type neighborhood environmental quality in communities with different urbanization levels. *Environmental Science & Policy*. 2014;38:1-10. doi: <https://doi.org/10.1016/j.envsci.2013.10.009>.
19. Li YC, Qiu JQ, Shu M, Ho SSH, Cao JJ, Wang GH, et al. Characteristics of polycyclic aromatic hydrocarbons in PM2.5 emitted from different cooking activities in China. *Environmental Science and Pollution Research International*. 2018;25(5):4750-60. doi: <https://doi.org/10.1007/s11356-017-0603-0>.
20. Torkmahalleh MA, Goldasteh I, Zhao Y, Udochu NM, Rossner A, Hopke PK, et al. PM2.5 and ultrafine particles emitted during heating of commercial cooking oils. *Indoor Air*. 2012;22(6):483-91. doi: <https://doi.org/10.1111/j.1600-0668.2012.00783.x>.
21. Lu F, Shen B, Yuan P, Li S, Sun Y, Mei X. The emission of PM2.5 in respiratory zone from Chinese family cooking and its health effect. *Science of The Total Environment*. 2019;654:671-7. doi: <https://doi.org/10.1016/j.scitotenv.2018.10.397>.
22. Hien TT, Hung NT, Lung SCC, Ngan TA, Minh TH. Characterization of Particulate Matter (PM1 and PM2.5) from Incense Burning Activities in Temples in Vietnam and Taiwan. *Aerosol and Air Quality Research*. 2022;22(11):220193. doi: <https://doi.org/10.4209/aaqr.220193>.
23. Vu HNK, Ha QP, Nguyen DH, Nguyen TTT, Nguyen TT, Nguyen TTH, et al. Poor Air Quality and Its Association with Mortality in Ho Chi Minh City: Case Study. *Atmosphere*. 2020;11(7):750. doi: <https://doi.org/10.3390/atmos11070750>.

24. VNU-UET, Live&Learn, USAID. State of PM2.5 in Vietnam during 2019-2020: Based on multi-source data. 2021.
25. Hu ZW, Zhao YN, Cheng Y, Guo CY, Wang X, Li N, et al. Living near a Major Road in Beijing: Association with Lower Lung Function, Airway Acidification, and Chronic Cough. *Chinese Medical Journal*. 2016;129(18):2184-90. doi: <https://doi.org/10.4103/0366-6999.189923>.
26. Bayer-Oglesby L, Schindler C, Arx MEH-v, Braun-Fahrländer C, Keidel D, Rapp R, et al. Living near Main Streets and Respiratory Symptoms in Adults: The Swiss Cohort Study on Air Pollution and Lung Diseases in Adults. *American Journal of Epidemiology*. 2006;164(12):1190-8. doi: <https://doi.org/10.1093/aje/kwj338>.
27. Serya H, Hadidy Se, S EB. Respiratory health effects among female street food vendors in Mansoura City, Egypt. *Egyptian Journal of Occupational Medicine*. 2019;43(1):17-32. doi: <https://doi.org/10.21608/ejom.2019.25104>.

**Table 1. Multivariable regression analysis of PM<sub>2.5</sub> exposure and respiratory symptoms.**

<b>Pollution Source</b>	<b>Regression Coefficient (<math>\beta</math>)</b>	<b>p-value</b>	<b>Partial R<sup>2</sup></b>
<b>Stationary Street Food Vendors</b>	53.22	<0.001	0.2115
<b>Stop-and-Go Traffic</b>	4.52	<0.001	0.0028
<b>Continuous Traffic</b>	7.47	<0.001	0.0093
<b>Temples</b>	3.67	<0.001	0.0024
<b>Fuel Stations</b>	-1.52	0.024	0.0004
<b>Background Site (10m)</b>	1.03	<0.001	0.1180
<b>Temperature</b>	0.34	0.12	0.0002
<b>Humidity</b>	0.28	0.002	0.0008

**Table 2. Baseline characteristics of study participants (n = 184)**

<b>Characteristic</b>	<b>Frequency</b>	<b>Percentage (%)</b>	<b>Characteristic</b>	<b>Frequency</b>	<b>Percentage (%)</b>
<b>Age group</b>			<b>Incense use</b>		
18-27 years	23	12.5	No	49	26.6
28-37 years	44	23.9	Yes	135	73.4
>37 years	117	63.6	<b>Living with a smoker</b>		
<b>Gender</b>			No	133	72.3
Male	96	52.2	Yes	51	27.7
Female	88	47.8	<b>Living near stop-and-go traffic</b>		
<b>Current occupation</b>			No	126	68.5
Homemaker	31	16.9	Yes	58	31.5
Office worker	32	17.4	<b>Living near continuous traffic</b>		
Business/trade	69	37.5	No	119	64.7
Other	52	28.3	Yes	65	35.3
<b>Duration of residence in the area</b>			<b>Living near school traffic</b>		
3-10 years	82	44.6	No	129	70.1
11-20 years	44	23.9	Yes	55	29.9
>20 years	58	31.5	<b>Living near a fuel station</b>		
<b>History of respiratory diseases</b>			No	170	92.4
No	160	87.0	Yes	14	7.6
Yes	24	13.0	<b>Living near street food vendors</b>		
<b>Smoking status</b>			No	157	85.3
Never	145	78.8	Yes	27	14.7
Current smoker	31	16.9	<b>Living near a temple</b>		
Former smoker	8	4.4	No	152	82.6
			Yes	32	17.4

**Table 3. Association between living near PM<sub>2.5</sub> emission sources and respiratory symptoms among study participants (n = 184)**

Characteristic	Cough OR (95% CI)	Sputum Production OR (95% CI)	Wheezing OR (95% CI)	Shortness of Breath OR (95% CI)
<b>Living near stop-and-go traffic</b>				
No	1	1	1	1
Yes	1.03 (0.39 - 2.51)	1.60 (0.54 - 4.46)	0.84 (0.25 - 2.37)	1.27 (0.50 - 3.05)
<b>Living near continuous traffic</b>				
No	1	1	1	1
Yes	1.26 (0.51 - 3.00)	<b>5.54 (1.95 - 18.4)</b> *	2.50 (0.92 - 7.00)	0.85 (0.33 - 2.06)
<b>Living near school traffic</b>				
No	1	//	1	1
Yes	0.56 (0.17 - 1.48)		0.28 (0.04 - 1.06)	0.72 (0.25 - 1.84)
<b>Living near fuel stations</b>				
No	1	1		1
Yes	1.89 (0.38 - 6.76)	0.78 (0.03 - 4.36)	0.78 (0.03 - 4.36)	2.87 (0.71 - 9.66)
<b>Living near stationary street food vendors</b>				
No	1	1	1	1
Yes	0.50 (0.07 - 1.85)	<b>3.45 (1.08 - 10.1)</b> *	0.75 (0.10 - 2.90)	0.50 (0.07 - 1.85)
<b>Living near temples</b>				
No	1	//	//	1
Yes	0.40 (0.06 - 1.47)			0.64 (0.14 - 2.02)

\*p-value < 0.05; // Not applicable OR: odds ratio; CI: confidence interval

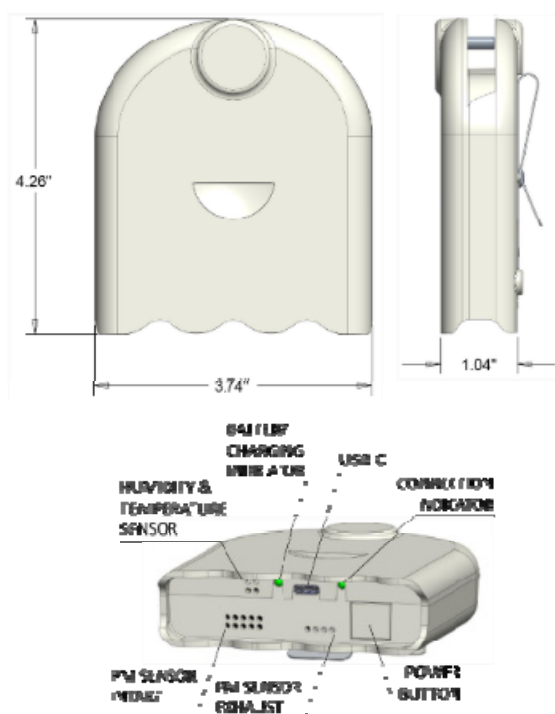
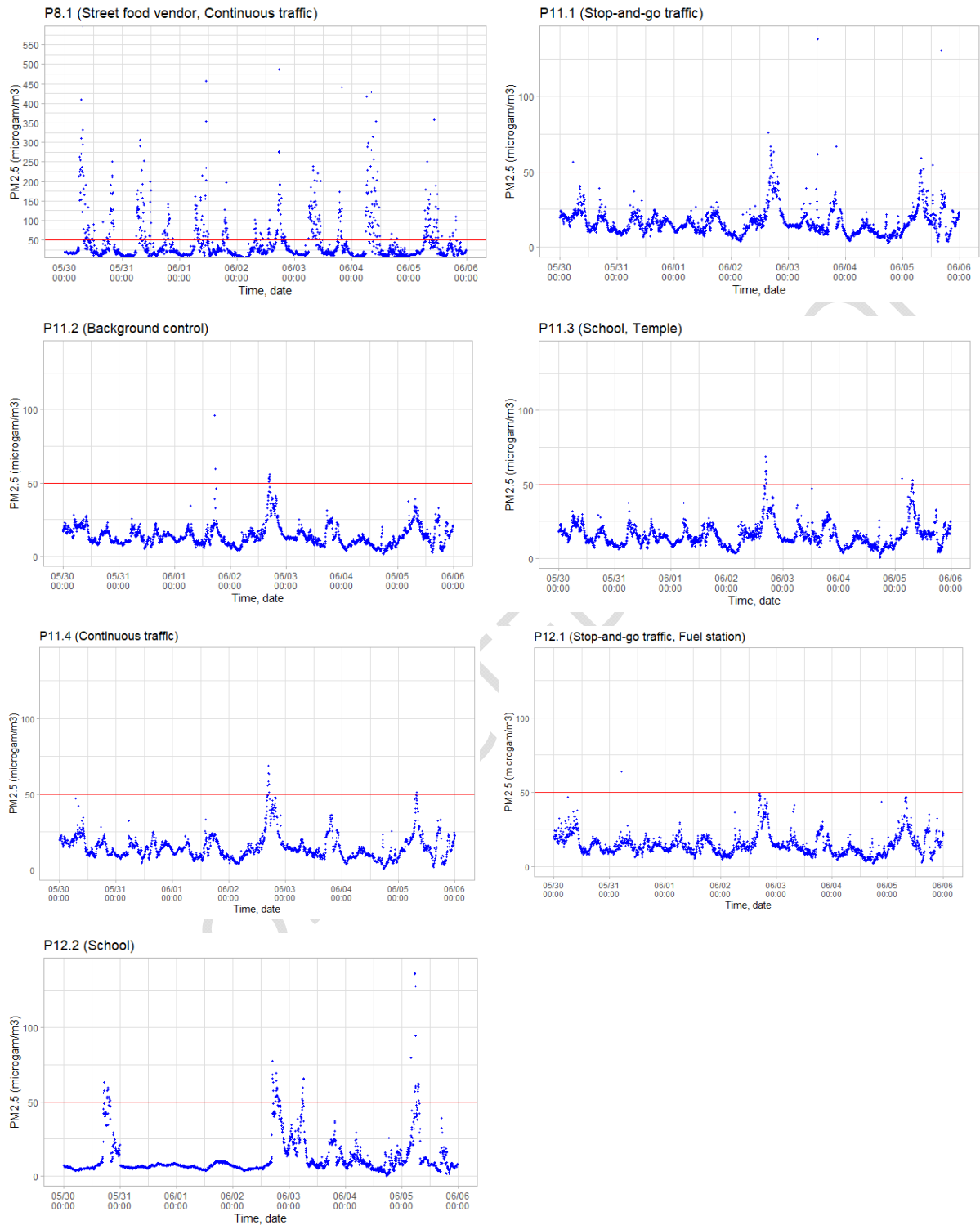
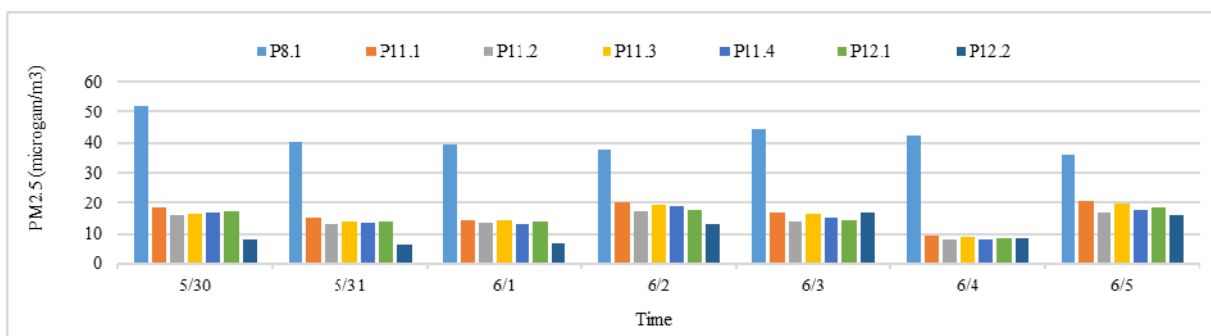


Figure 1. The low cost air sensor Airbeam 3





**Figure 3.** Average PM<sub>2.5</sub> concentrations across various pollution sources in District 5.



**Figure 4.** Daily average PM<sub>2.5</sub> concentration across different monitoring sites.

**Types of PM<sub>2.5</sub> sources:** P8.1- Stationary street food vendor, Continuous traffic; P11.1- Stop and go traffic; P11.2- Background control; P11.3- School, Temples; P11.4- Continuous traffic; P12.1- Stop and go traffic, Fuel station; P12.2- School.